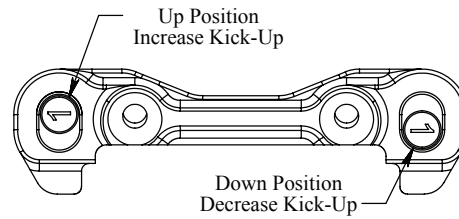
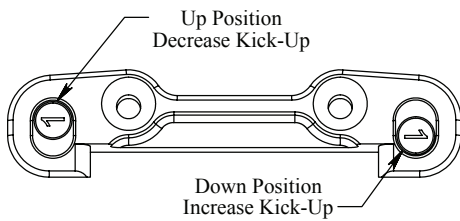
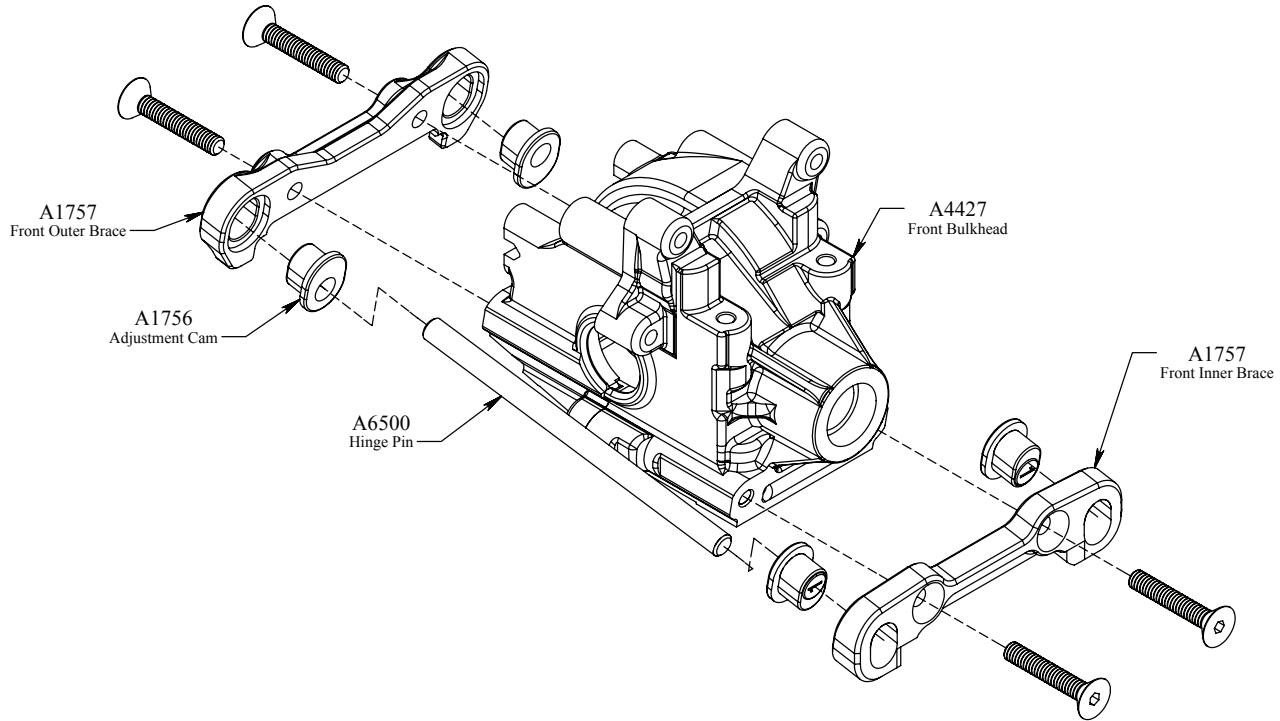


STEP A-01

Adjustable Hinge Pin Brace Install



Front Kick-Up Angle Adjustment

| Outer Front Brace | | Inner Front Brace | | Total Kick-Up |
|-------------------|---------------|-------------------|---------------|---------------|
| Insert Position | Insert Number | Insert Position | Insert Number | |
| Up | 1° | Down | 1° | +2° |
| Up | 0.5° | Down | 0.5° | +1° |
| Middle | 0° | Middle | 0° | 0° |
| Down | 0.5° | Up | 0.5° | -1° |
| Down | 1° | Up | 1° | -2° |

- Remove the Bulkhead from the chassis.
- Remove the existing Hinge Pin Braces and plastic covers.
- Select the desired Adjustment Cam and press it into the new Adjustable Hinge Pin Braces.
- **Note the position of the number on the outside of the Cam. Always install the same number Cam in the same orientation on each side of the car.*
- Install the Inner Adjustable Hinge Pin Brace re-using the mounting hardware.
- Align the Arms and Hinge Pins with the Adjustment Cam.
- Install the Outer Adjustable Hinge Pin Brace re-using the existing hardware.
- Re-attach the bulkhead to the chassis.
- Check the suspension to ensure it moves freely and does not bind.