

Name: Aaron Kothman

Date: 01/26/2020

Event: Reedy Race of Champions



City: Huntington Beach State: California

Track: OCRC

Track Conditions

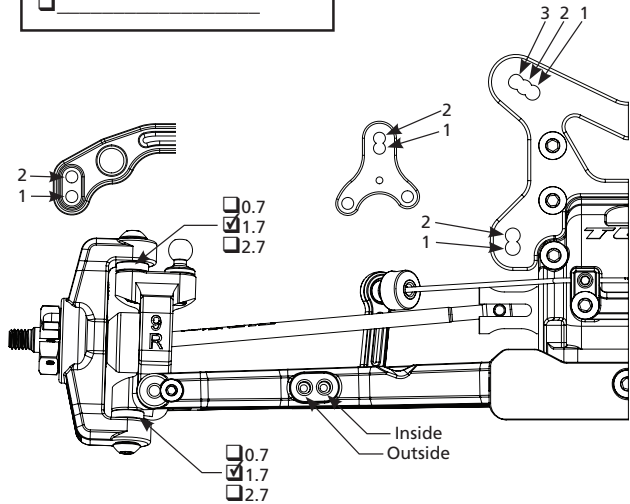
- Track conditions checkboxes: Dirt, Carpet, Tight, Smooth, Hard Packed, Dry, Clay, Astro Turf, Open, Rough, Loamy, Wet, Grip Level: Low, Medium, High, Tread Level: Pin, Ghost Pin, Slicks

Front Suspension

Front suspension settings: Toe: +1 deg, Camber: -2 deg, Ride Height: 17mm, Caster Block: 6, 9, 12, Shaft Dia: 3.0, 3.5, Piston: 2 x 1.6 Thin, Oil: 37.5 TLR, Limiters: Internal: 1mm, External: 0mm, Stroke: 23.5 mm, Shock Eyelet: Std, +2, Shock Location: 2 - outside, Spring: AE V2 Yellow ASC91834, Sway Bar: 1.2 mm, Steering Brace: Posts, Posts to Gearbox, Rack Location: 1, 2, Rack: Composite, Aluminum, Spindle Steering Arm: 1, Other, Spindle Ball Stud: Standard, Low Spacers: 0mm, Draglink Ball Stud: Standard, Low Spacers: 1mm, Bell Crank Arm Location: 1, 2, Other, Hex Width (mm): 4.0, 4.5, 5.0, 5.5, Camber Link, Inner: 1, 2, Outer Spacers: 0mm, Mud Guard: Soft, Stiffezel, Front Wheels: 22X-4 Std, Other, Front Wing: None, TLR Scoop, Other, Diff Gears: Steel, Composite, Planet Gears: 2, 4, Diff Oil: 7,000cs TLR, Ring/Pinion: Steel, Composite, Driveshaft: X74mm CVA, 74mm LCD

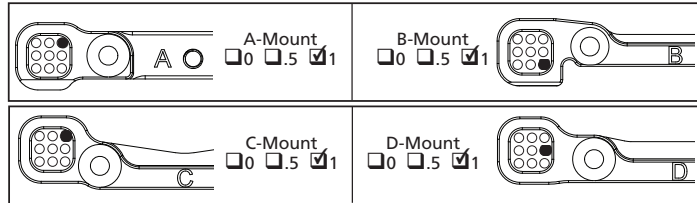
Stiffezel Parts

- Stiffezel parts checkboxes: Front Arm, Rear Arm



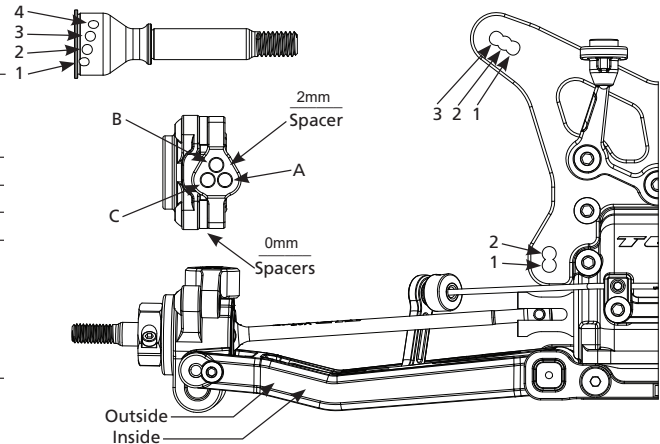
Center Drive

Center drive settings: Motor Mount Location: Forward, Rearward, Drive Type: Slipper, Center Diff, Slipper Pads: Torque (yel), Drive (org), Diff Gear: Steel, Composite, Planet Gears: 2, 4, Diff Oil: 200,000cs, Diff Cover: Composite, Aluminum



Rear Suspension

Rear suspension settings: Gear Box Shim: None, 2mm, Axle Height: 0, +1, +2, +3, +4, Ride Height: 17mm, Camber: -2 deg, Hub Spacing: 1.5mm Fr, 1.5mm Rr, Hex Width (mm): 4.0, 4.5, 5.0, 6.0, Shaft Dia: 3.0, 3.5, Piston: 2 x 1.7 Thin, Oil: 32.5 TLR, Spring: AE V2 Blue ASC91840, Sway Bar: 1.2mm, Limiters: Internal: 0mm, External: 0mm, Stroke: 30.5mm, Shock Eyelet: Std, +2, Shock Location: 3 - inside, Camber Link, Inner: 1, 2, Outer: A, B, C, Front Battery Spacer: None, 1, 2, 3, Diff Gears: Steel, Composite, Planet Gears: 2, 4, Diff Oil: 7,000cs TLR, Ring/Pinion: Steel, Composite, Driveshaft: X67mm, X68mm, Other, CV Pin Position: 1, 2, 3, 4, Wing/Wickerbill: Top line TLR 6.5 Medium, Wing Angle: 0, 2, 4, Wing Height:



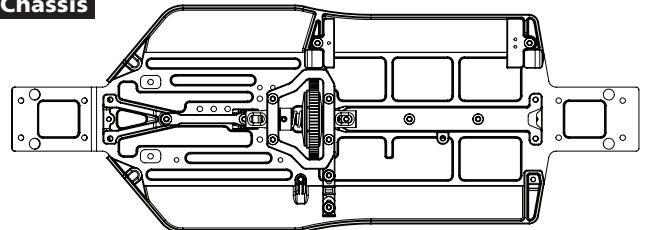
Tires

Table with columns for Front and Rear, rows for Brand, Tread, Compound, Insert, Sauce

Electronics

Electronics settings: Radio, Servo: Spektrum 6240, ESC: Hobbywing XR10 G2 Elite, Initial Brake: Drag, Drag Brake: 14%, Throttle Profile, Timing Advance, Steering Expo, Throttle/Brake EPA, Motor: Hobbywing V10 G3 6.0T, Spur/Pinion: 81/20, Battery: Orion 5500 Graphene, Battery Weight: 208g

Chassis



Electronics Plate Carbon checkbox

Total Weight: FR: % RR: %

Notes

Notes: 3rd Place, Open Class, Lunsford upper titanium screw kit, TLR titanium turnbuckles, ballstuds, and shock standoffs.