

Name: Frank Root Date: Jan 2020 Event: Reedy Race of Champions  
 City: Huntington Beach State: California Track: OCRC



**Track Conditions**

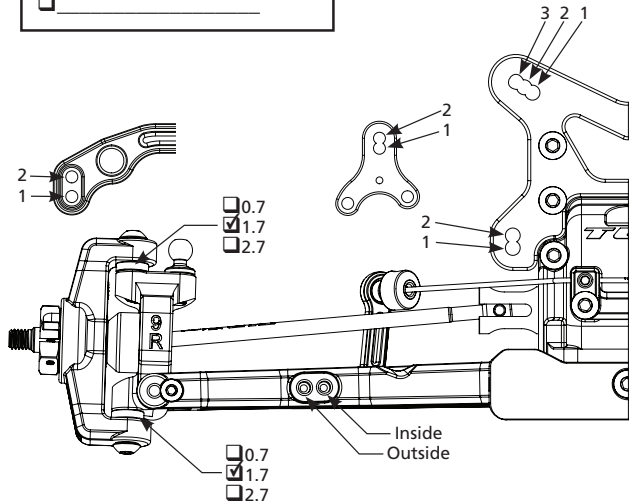
Dirt  Carpet  Tight  Smooth  Hard Packed  Dry  Wet  
 Clay  Astro Turf  Open  Rough  Loamy  Grip Level:  Low  Medium  High  
 Tread Level:  Pin  Ghost Pin  Slicks

**Front Suspension**

Toe: +1 deg Camber: -2 deg  
 Ride Height: 18mm Caster Block:  6°  9°  12°  
 Shaft Dia:  3.0  3.5 Piston: 2 x 1.6 Thin Oil: 40 TLR  
 Limiters: Internal: 1mm External: 1mm Stroke: 22 mm  
 Shock Eyelet:  Std.  +2 Shock Location: 2 - Inside  
 Spring: X-Ray 3 dot XRA368193 Sway Bar: 1.0mm  
 Steering Brace:  Posts  Posts to Gearbox  
 Rack Location:  1  2 Rack:  Composite  Aluminum  
 Spindle Steering Arm:  1  Other  
 Spindle Ball Stud:  Standard  Low Spacers: 0mm  
 Draglink Ball Stud:  Standard  Low Spacers: 1mm  
 Bell Crank Arm Location:  1  2  Other  
 Hex Width (mm):  4.0  4.5  5.0  5.5  
 Camber Link, Inner:  1  2 Outer Spacers: 0mm  
 Mud Guard:  Soft  Stiffezel  
 Front Wheels:  22X-4 Std  Other  
 Front Wing:  None  TLR Scoop  Other  
 Diff Gears:  Steel  Composite Planet Gears:  2  4  
 Diff Oil: 6,000cs TLR Ring/Pinion:  Steel  Composite  
 Driveshaft:  X74mm CVA  74mm LCD

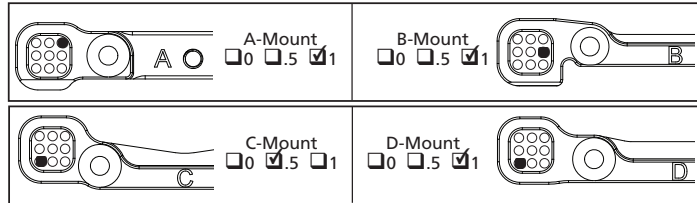
**Stiffezel Parts**

Front Arm  Rear Arm



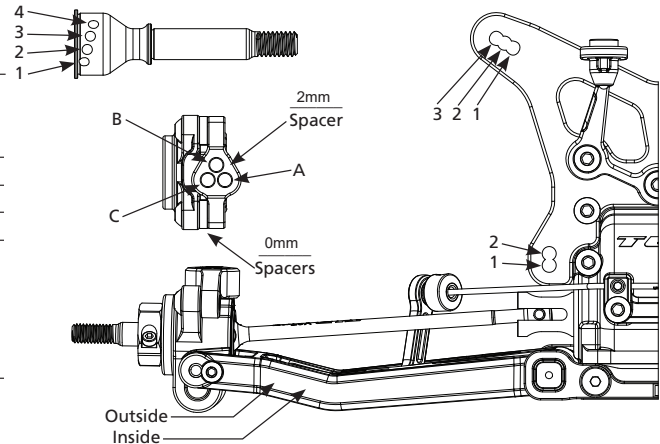
**Center Drive**

Motor Mount Location:  Forward  Rearward  
 Drive Type:  Slipper  Center Diff  
 Slipper Pads:  Torque (yel)  Drive (org)  
 Diff Gear:  Steel  Composite Planet Gears:  2  4  
 Diff Oil: \_\_\_\_\_ Diff Cover:  Composite  Aluminum



**Rear Suspension**

Gear Box Shim:  None  2mm  \_\_\_\_\_  
 Axle Height:  0  +1  +2  +3  +4  
 Ride Height: 18mm Camber: -2 deg  
 Hub Spacing: 2mm Fr 1mm Rr  
 Hex Width (mm):  4.0  4.5  5.0  6.0  
 Shaft Dia:  3.0  3.5 Piston: 2 x 1.7 Thin Oil: 32.5 TLR  
 Spring: X-Ray 2 dot XRA368292 Sway Bar: 1.2mm  
 Limiters: Internal: 0mm External: 1mm Stroke: 30.5mm  
 Shock Eyelet:  Std.  +2 Shock Location: 3 - inside  
 Camber Link, Inner:  1  2 Outer:  A  B  C  
 Front Battery Spacer:  None  1  2  3  
 Diff Gears:  Steel  Composite Planet Gears:  2  4  
 Diff Oil: 4,000cs TLR Ring/Pinion:  Steel  Composite  
 Driveshaft:  X67mm  X68mm  Other  
 CV Pin Position:  1  2  3  4  
 Wing/Wickerbill: TLR 6.5", Low line  
 Wing Angle:  0°  2°  4° Wing Height: -



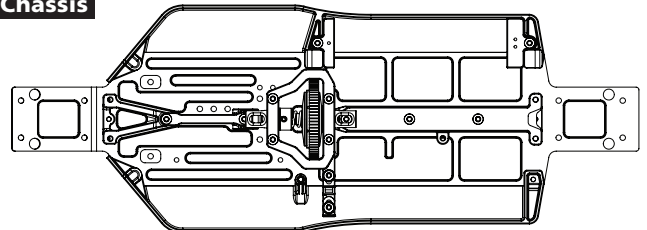
**Tires**

	Front	Rear
Brand:	Handout	Handout
Tread:	Handout	Handout
Compound:	Handout	Handout
Insert:	Handout	Handout
Sauce:	Handout	Handout

**Electronics**

Radio: Spektrum DX6R  
 Servo: Spektrum S6240RX  
 ESC: Muchmore Fleta Pro V2  
 Initial Brake: 0  
 Drag Brake: 3%  
 Throttle Profile: 8  
 Timing Advance: 12" turbo  
 Steering Expo: -  
 Throttle/Brake EPA: 100/85  
 Motor: Motiv MC2 6.5T, 30° timing  
 Spur/Pinion: 81/20  
 Battery: Motiv Defy G 6000mAh HV  
 Battery Weight: 214g

**Chassis**



Electronics Plate  Carbon  
  
 Total Weight: 1680g  
 FR: \_\_\_\_\_ % RR: \_\_\_\_\_ %

**Notes**

11th Place, Open Class  
 TLR Ti turnbuckles, ball studs and shock mounts. Alum nuts throughout.  
 Lunsford Full Ti Screw Kit, RCSS Ceramic #BeastMode Bearings.