

Name: Matthew Williby Date: Feb 2020 Event: Clubbin'  
 City: Huntington Beach State: CA Track: OCRC Raceway



### Track Conditions

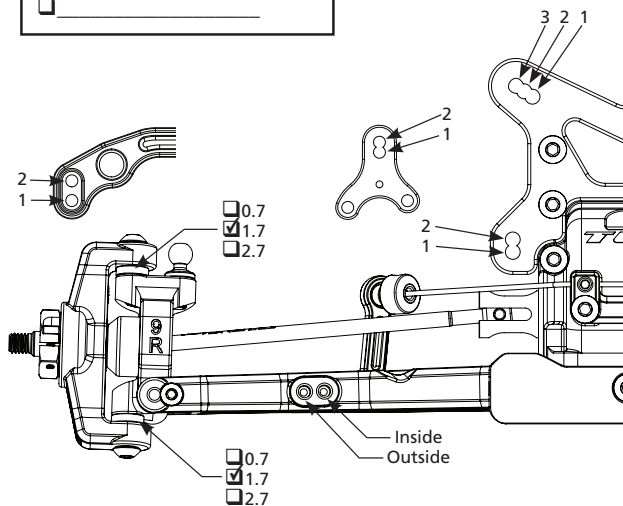
☐ Dirt ☐ Carpet ☐ Tight ☒ Smooth ☒ Hard Packed ☒ Dry ☐ Wet **Grip Level:** ☐ Low ☒ Medium ☒ High  
☒ Clay ☐ Astro Turf ☐ Open ☒ Rough ☐ Loamy **Tread Level:** ☒ Pin ☐ Ghost Pin ☐ Slicks

### Front Suspension

Toe: +0 deg Camber: -1 deg  
 Ride Height: 19mm Caster Block: ☐ 6° ☒ 9° ☐ 12°  
 Shaft Dia: ☒ 3.0 ☐ 3.5 Piston: 2 x 1.6 Standard Oil: 35 TLR  
 Limiters: Internal: 1mm External: 1mm Stroke: 23 mm  
 Shock Eyelet: ☒ Std. ☐ +2 Shock Location: 2 - Inside  
 Spring: LF Yellow Sway Bar: 1.0mm  
 Steering Brace: ☒ Posts ☐ Posts to Gearbox  
 Rack Location: ☐ 1 ☒ 2 Rack: ☐ Composite ☒ Aluminum  
 Spindle Steering Arm: ☒ 1 ☐ Other  
 Spindle Ball Stud: ☒ Standard ☐ Low Spacers: 0mm  
 Draglink Ball Stud: ☒ Standard ☐ Low Spacers: 1mm  
 Bell Crank Arm Location: ☐ 1 ☒ 2 ☐ Other  
 Hex Width (mm): ☒ 4.0 ☐ 4.5 ☐ 5.0 ☐ 5.5  
 Camber Link, Inner: ☐ 1 ☒ 2 Outer Spacers: 0mm  
 Mud Guard: ☒ Soft ☐ Stiffezel  
 Front Wheels: ☒ 22X-4 Std ☐ Other  
 Front Wing: ☐ None ☒ TLR Scoop ☐ Other  
 Diff Gears: ☐ Steel ☒ Composite Planet Gears: ☐ 2 ☒ 4  
 Diff Oil: 10,000cs TLR Ring/Pinion: ☒ Steel ☐ Composite  
 Driveshaft: ☒ X74mm CVA ☐ 74mm LCD ☐

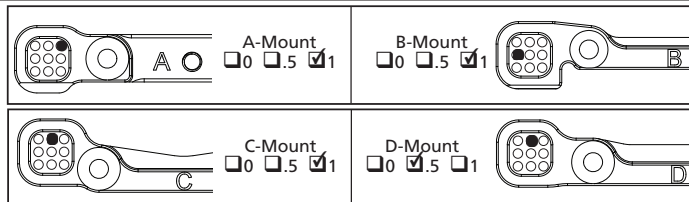
### Stiffezel Parts

☐ Front Arm ☐ Rear Arm  
☐



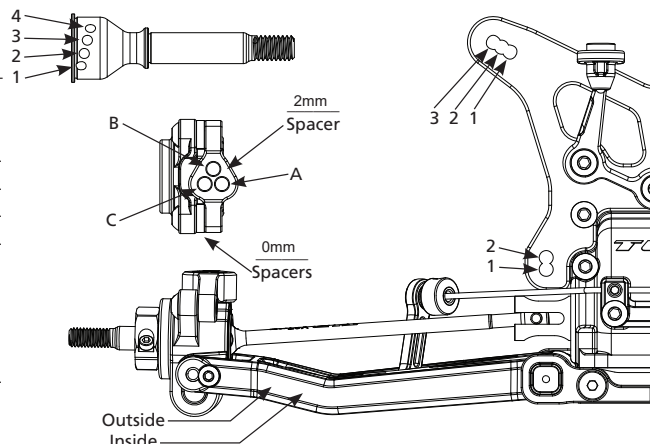
### Center Drive

Motor Mount Location: ☐ Forward ☒ Rearward  
 Drive Type: ☐ Slipper ☒ Center Diff  
 Slipper Pads: ☐ Torque (yel) ☐ Drive (org)  
 Diff Gear: ☐ Steel ☒ Composite Planet Gears: ☐ 2 ☒ 4  
 Diff Oil: 200,000cs Diff Cover: ☐ Composite ☒ Aluminum



### Rear Suspension

Gear Box Shim: ☒ None ☐ 2mm ☐  
 Axle Height: ☒ 0 ☐ +1 ☐ +2 ☐ +3 ☐ +4  
 Ride Height: 19mm Camber: -1 deg  
 Hub Spacing: 1mm Fr 2mm Rr  
 Hex Width (mm): ☐ 4.0 ☐ 4.5 ☒ 5.0 ☐ 5.5 ☐ 6.0  
 Shaft Dia: ☒ 3.0 ☐ 3.5 Piston: 2 x 1.7 Standard Oil: 30 TLR  
 Spring: LF Pink Sway Bar: 1.2mm  
 Limiters: Internal: 1mm External: 1mm Stroke: 29mm  
 Shock Eyelet: ☒ Std. ☐ +2 Shock Location: 2 - inside  
 Camber Link, Inner: ☐ 1 ☒ 2 Outer: ☒ A ☐ B ☐ C  
 Front Battery Spacer: ☐ None ☒ 1 ☐ 2 ☐ 3  
 Diff Gears: ☐ Steel ☒ Composite Planet Gears: ☐ 2 ☒ 4  
 Diff Oil: 10,000cs Ring/Pinion: ☒ Steel ☐ Composite  
 Driveshaft: ☒ X67mm ☐ X68mm ☐ Other  
 CV Pin Position: ☒ 1 ☐ 2 ☐ 3 ☐ 4  
 Wing/Wickerbill: TLR 6.5" No wicker  
 Wing Angle: ☐ 0° ☐ 2° ☒ 4° Wing Height: -



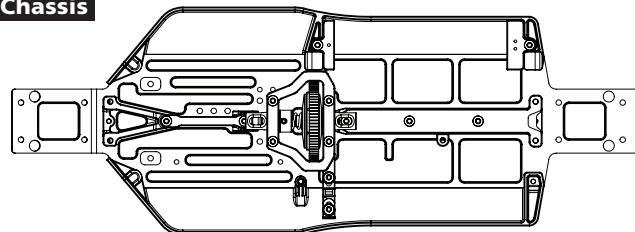
### Tires

	Front	Rear
Brand:	Pro-Line	Pro-Line
Tread:	Electron	Positron
Compound:	MC	MC
Insert:	Stock	Stock
Sauce:	Yellow LW	Yellow LW

### Electronics

Radio: Sanwa M12  
 Servo: Spektrum S6240  
 ESC: Hobbywing Stock Spec 80A  
 Initial Brake: 0  
 Drag Brake: 0  
 Throttle Profile: 30  
 Timing Advance: Blinky  
 Steering Expo: 0  
 Throttle/Brake EPA: 0  
 Motor: Schurr Speed V4 13.5  
 Spur/Pinion: 81/24  
 Battery: IP 6000mAh  
 Battery Weight: 215g

### Chassis



Electronics Plate  
☒ Carbon  
☐

Total Weight: 1690g  
 FR: % RR: %

### Notes

RCSS Ti turnbuckles, screws and ceramic bearings.