

Name: Tom Rinderknecht

Date: Jan 2020

Event: Reedy Race of Champions



City: Huntington Beach State: California

Track: OCRC Raceway

Track Conditions

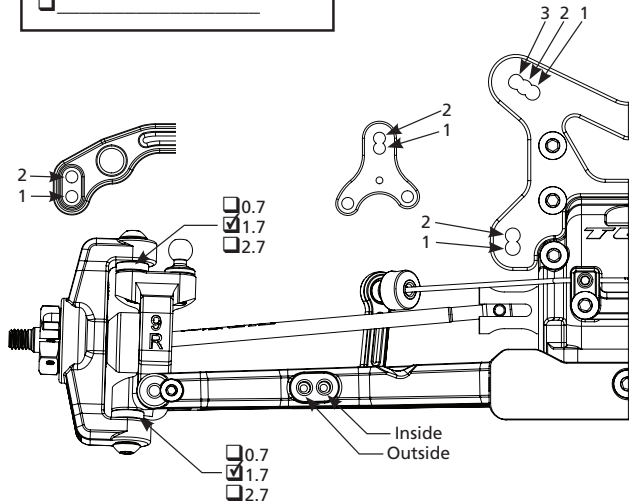
- Dirt Carpet Tight Smooth Hard Packed Dry Grip Level: Low Medium High
Clay Astro Turf Open Rough Loamy Wet Tread Level: Pin Ghost Pin Slicks

Front Suspension

Toe: +1 deg Camber: -1 deg
Ride Height: 17mm Caster Block: 6 9 12
Shaft Dia: 3.0 3.5 Piston: 2 x 1.6 Oil: 40wt
Limiters: Internal: 0mm External: 0mm Stroke: 23mm
Shock Eyelet: Std +2 Shock Location: 2 - Inside
Spring: ASC V2 Yellow ASC91834 Sway Bar: 1.0mm
Steering Brace: Posts Posts to Gearbox
Rack Location: 1 2 Rack: Composite Aluminum
Spindle Steering Arm: 1 Other
Spindle Ball Stud: Standard Low Spacers: 0mm
Draglink Ball Stud: Standard Low Spacers: 1mm
Bell Crank Arm Location: 1 2 Other
Hex Width (mm): 4.0 4.5 5.0 5.5
Camber Link, Inner: 1 2 Outer Spacers: 0mm
Mud Guard: Soft Stiffezel
Front Wheels: 22X-4 Std Other
Front Wing: None TLR Scoop Other
Diff Gears: Steel Composite Planet Gears: 2 4
Diff Oil: 7,000cs Ring/Pinion: Steel Composite
Driveshaft: X74mm CVA 74mm LCD

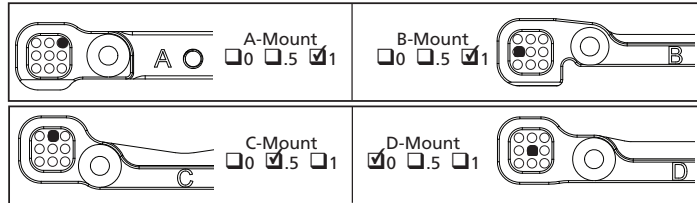
Stiffezel Parts

- Front Arm Rear Arm



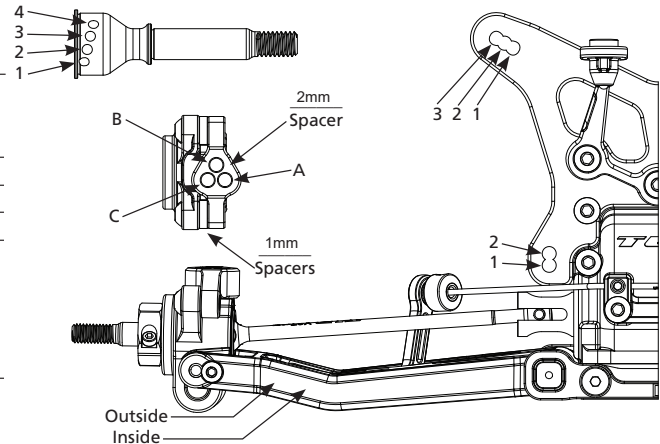
Center Drive

Motor Mount Location: Forward Rearward
Drive Type: Slipper Center Diff
Slipper Pads: Torque (yel) Drive (org)
Diff Gear: Steel Composite Planet Gears: 2 4
Diff Oil: 200,000cs Diff Cover: Composite Aluminum



Rear Suspension

Gear Box Shim: None 2mm
Axle Height: 0 +1 +2 +3 +4
Ride Height: 17mm Camber: -1 deg
Hub Spacing: 2mm Fr 1mm Rr
Hex Width (mm): 4.0 4.5 5.0 5.5 6.0
Shaft Dia: 3.0 3.5 Piston: 2 x 1.7mm Oil: 35wt
Spring: TLR Pink Sway Bar: 1.2mm
Limiters: Internal: 0 External: 0 Stroke: 31.5mm
Shock Eyelet: Std +2 Shock Location: 3 - Inside
Camber Link, Inner: 1 2 Outer: A B C
Front Battery Spacer: None 1 2 3
Diff Gears: Steel Composite Planet Gears: 2 4
Diff Oil: 5,000cs Ring/Pinion: Steel Composite
Driveshaft: X67mm X68mm Other
CV Pin Position: 1 2 3 4
Wing/Wickerbill: TLR 6.5", Lowest
Wing Angle: 0 2 4 Wing Height: Kit



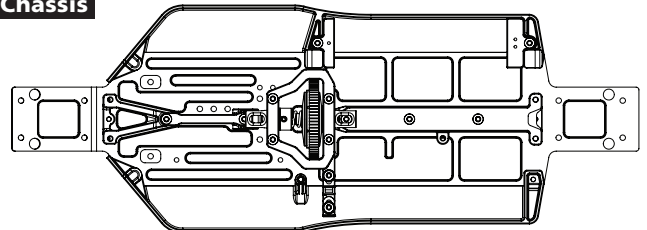
Tires

Table with columns for Front and Rear, and rows for Brand, Tread, Compound, Insert, and Sauce.

Electronics

Radio: M17
Servo: Spektrum S6240
ESC: HW XR10 G2 ELITE
Initial Brake: -
Drag Brake: 2%
Throttle Profile: 12K
Timing Advance: 30° Can
Steering Expo: -30 Fwd, Return
Throttle/Brake EPA: 100/100
Motor: Hobbywing 6.0
Spur/Pinion: 19/81
Battery: Spektrum 6300mAh
Battery Weight: 206g

Chassis



Electronics Plate Carbon
Total Weight: FR: % RR: %

Notes

Champion of Open 4wd!
Lunsford Ti Screw kits, upper and lower.