



Stampede®, Rustler®, Bandit® Wheelie Bar Instructions Covers Parts #2477, 3650, 3677, 3678

Use with Magnum 272™ transmission:



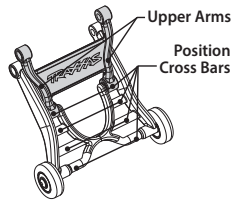
Use with Magnum 272R™ transmission:



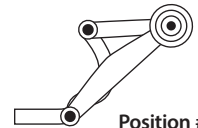
Note: When the wheelie bar is not necessary, the wheelie bar mount can be used alone for extra protection of the motor and transmission case.

Wheelie bar set-up tips and instructions:

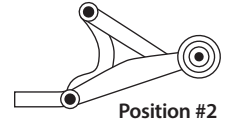
Changing the position of the wheelie bar height setting is easiest when installed on the vehicle. To set the position, unsnap the upper arms from the cross bars of the lower arms. Move the upper arms to the desired location, and then snap the arms together.



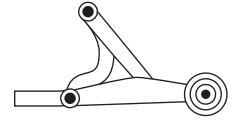
Pos. #1: The lowest position on the crossbars. Allows the vehicle to tip back the most for longer wheelies.



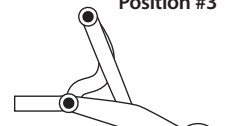
Pos. #2: The second lowest position on the crossbars.



Pos. #3: The second highest position on the crossbars.

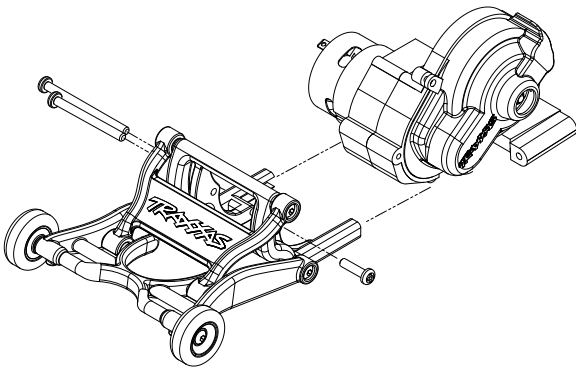


Pos. #4: The highest position on the crossbars. Provides the flattest launches, reducing the chance of a wheelie.



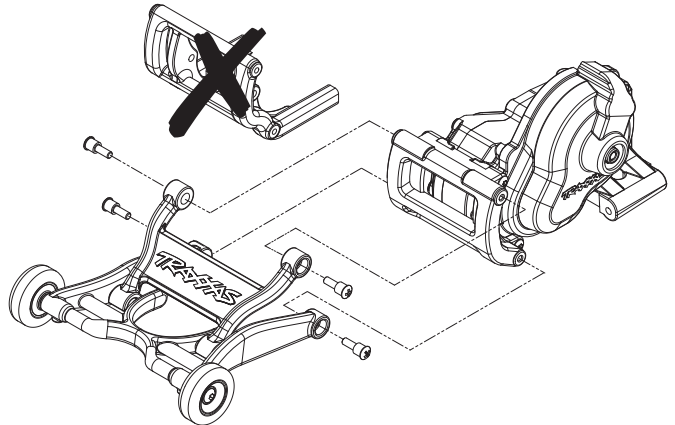
Note: Each setting can offer different results based on the individual ride height and droop settings of a particular vehicle. Try to avoid riding on the wheelie bar wheels during normal driving (this can happen in the lowest setting with lower than stock ride heights).

MAGNUM 272 TRANSMISSION



To install the #3678 wheelie bar on the Magnum 272 transmission, use the included hardware to secure the wheelie bar to the transmission case.

MAGNUM 272R TRANSMISSION



To install the #3678 wheelie bar on the Magnum 272R transmission, first remove the center mount from the wheelie bar by removing the four shoulder screws, and then secure the wheelie bar to the brace on the rear of the transmission case using the four shoulder screws. The additional hardware included with the #3678 package is not used.

If you have questions or need technical assistance, call Traxxas at

1-888-TRAXXAS

(1-888-872-9927) (U.S. residents only)

TRAXXAS.COM